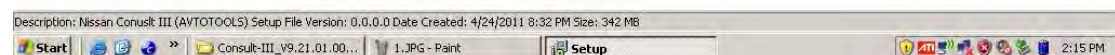
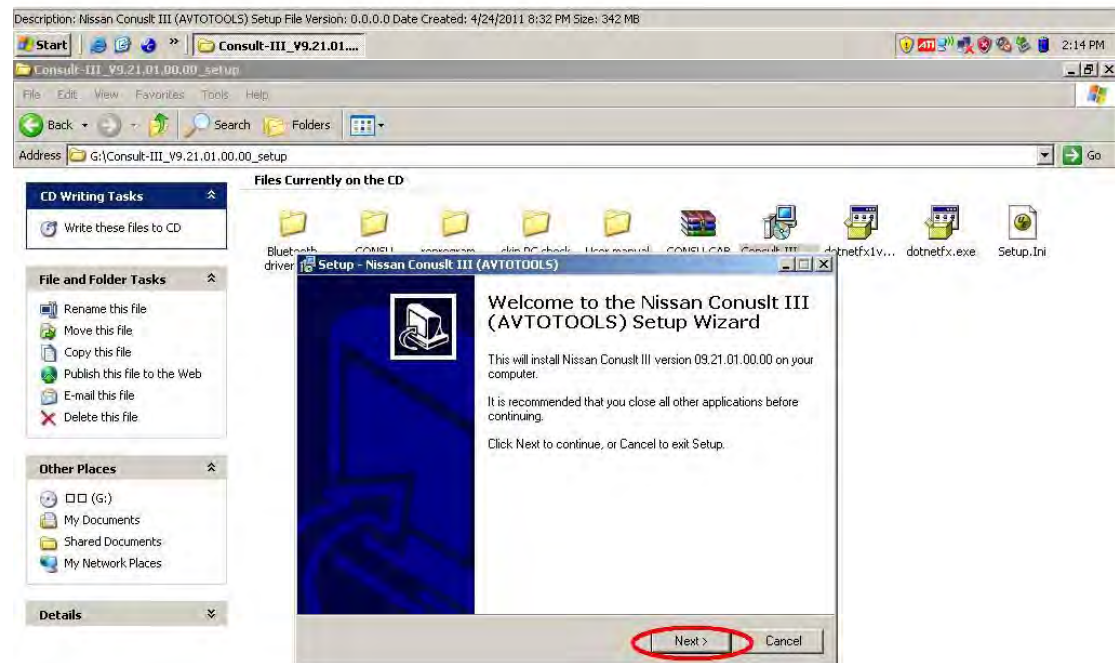
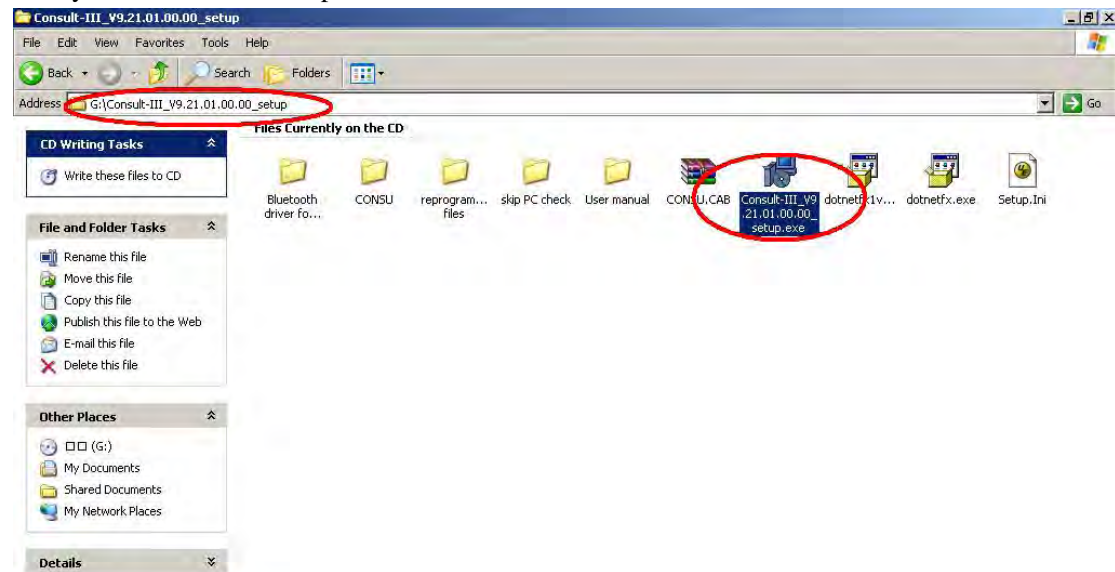
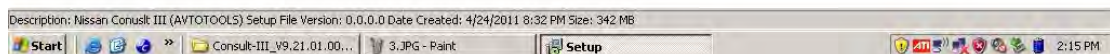
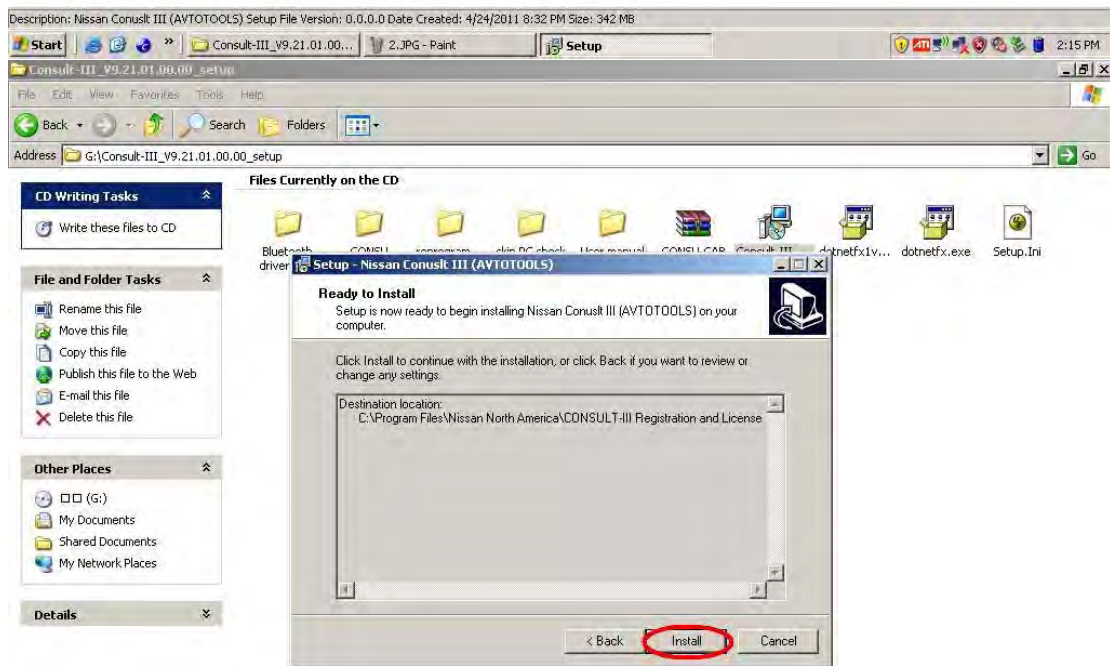
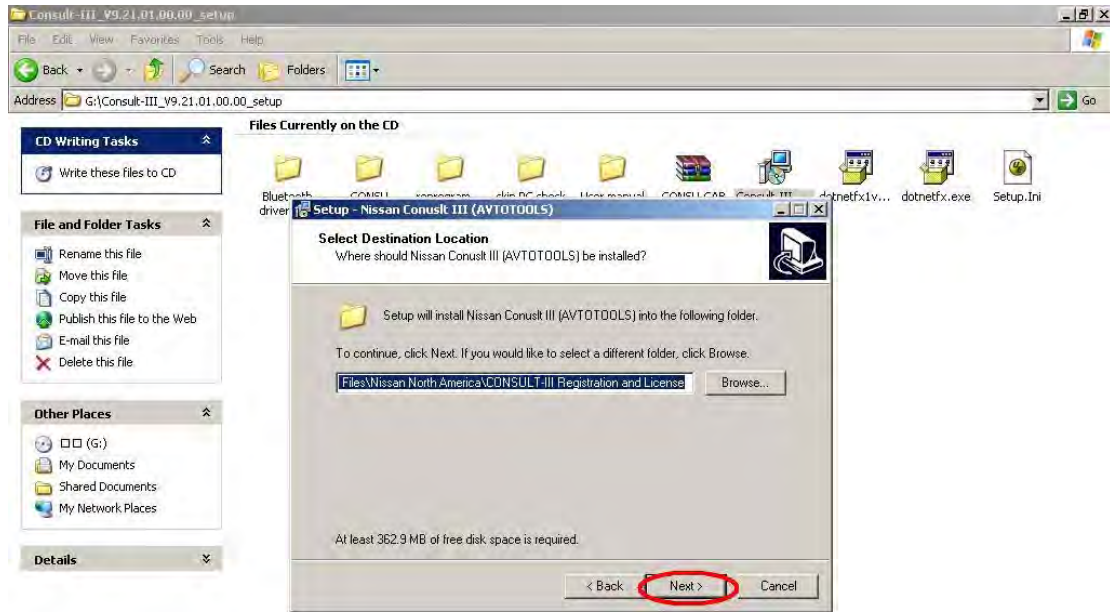


## Nissan Consult-III Installation Step and Registration Steps

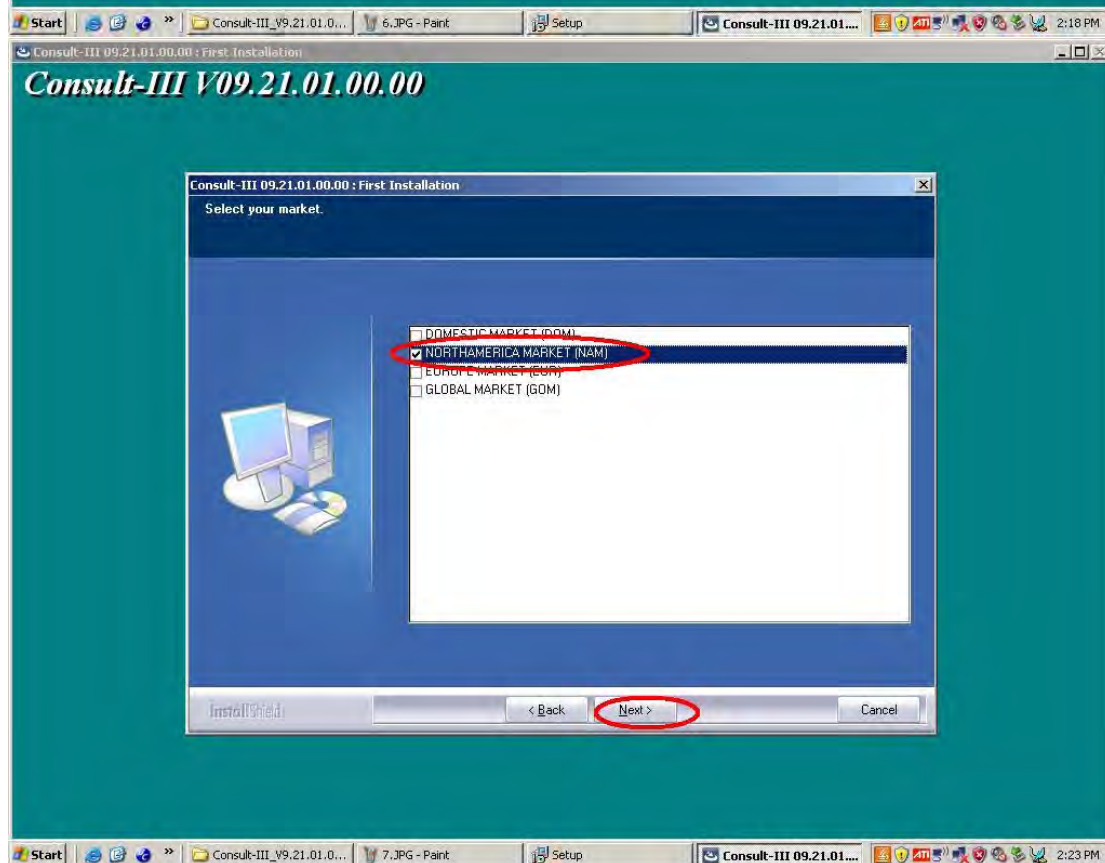
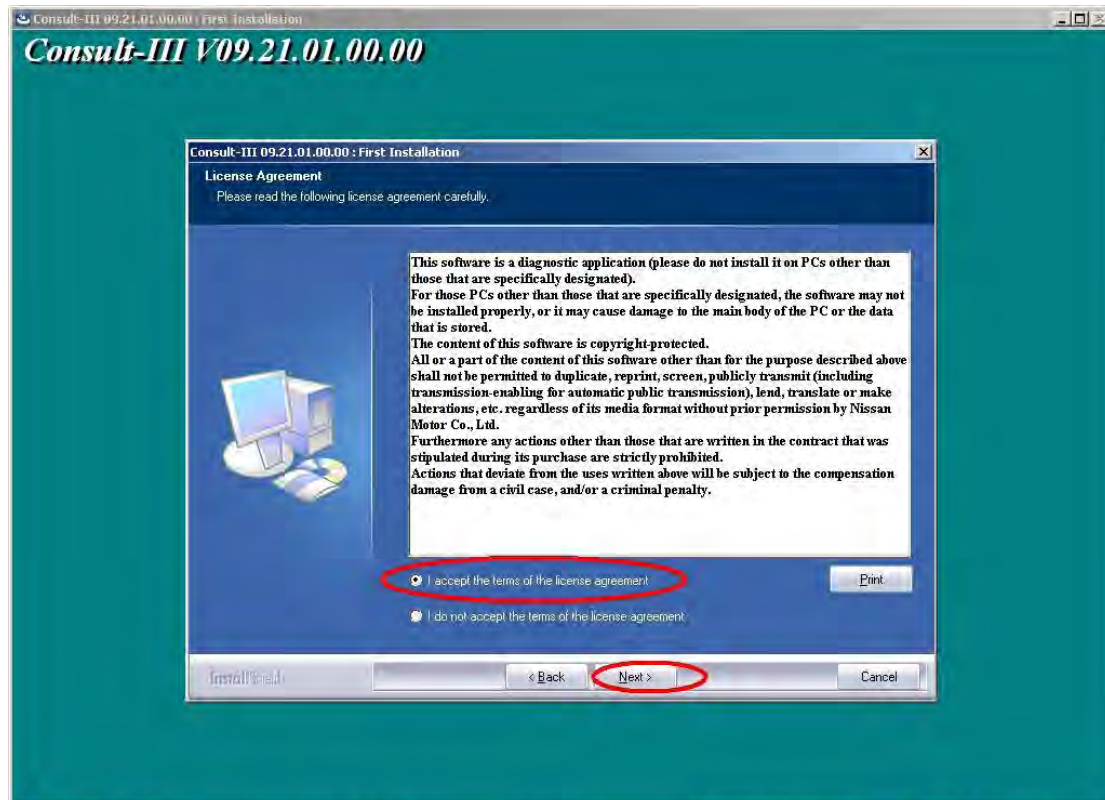
Firstly, install consult III step.exe

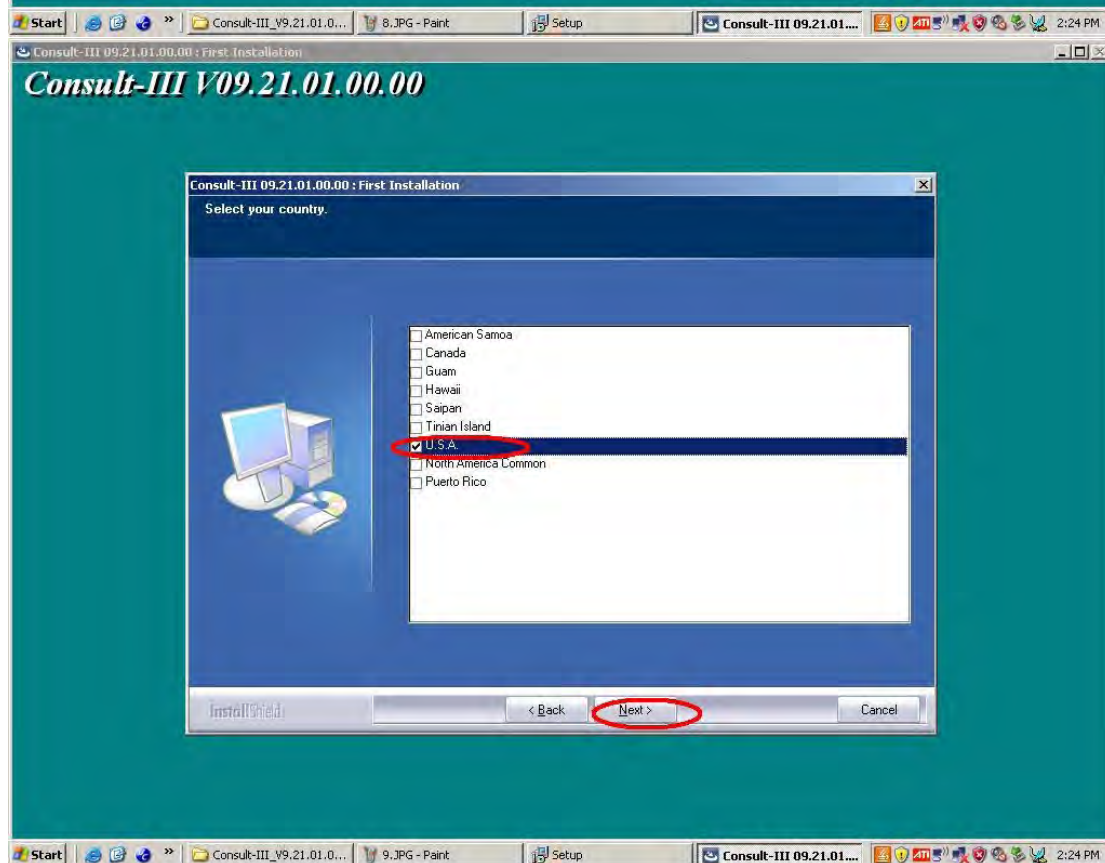
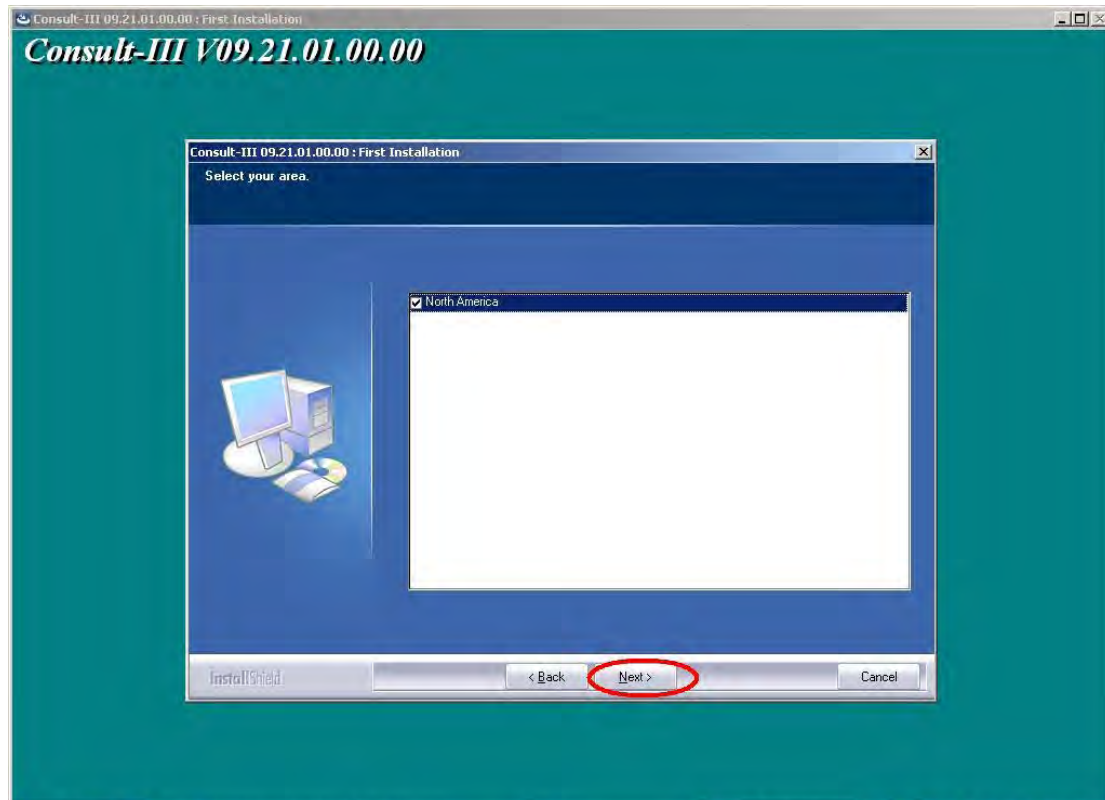


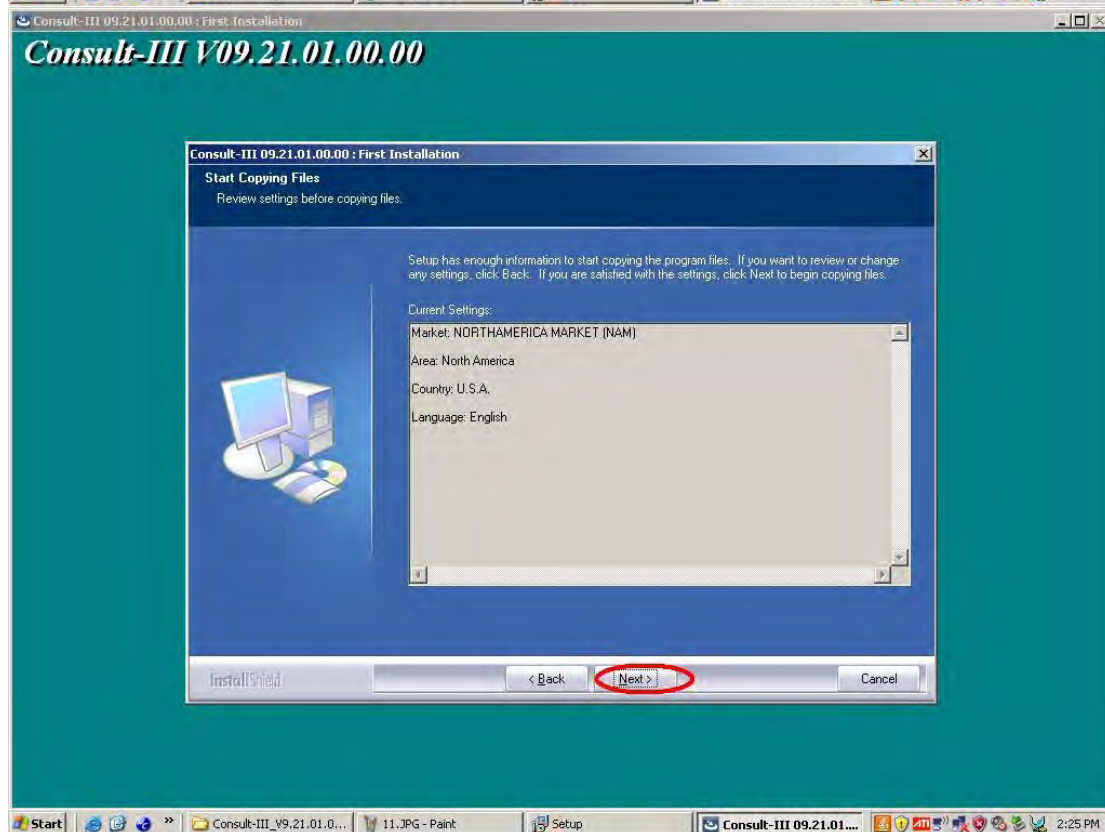
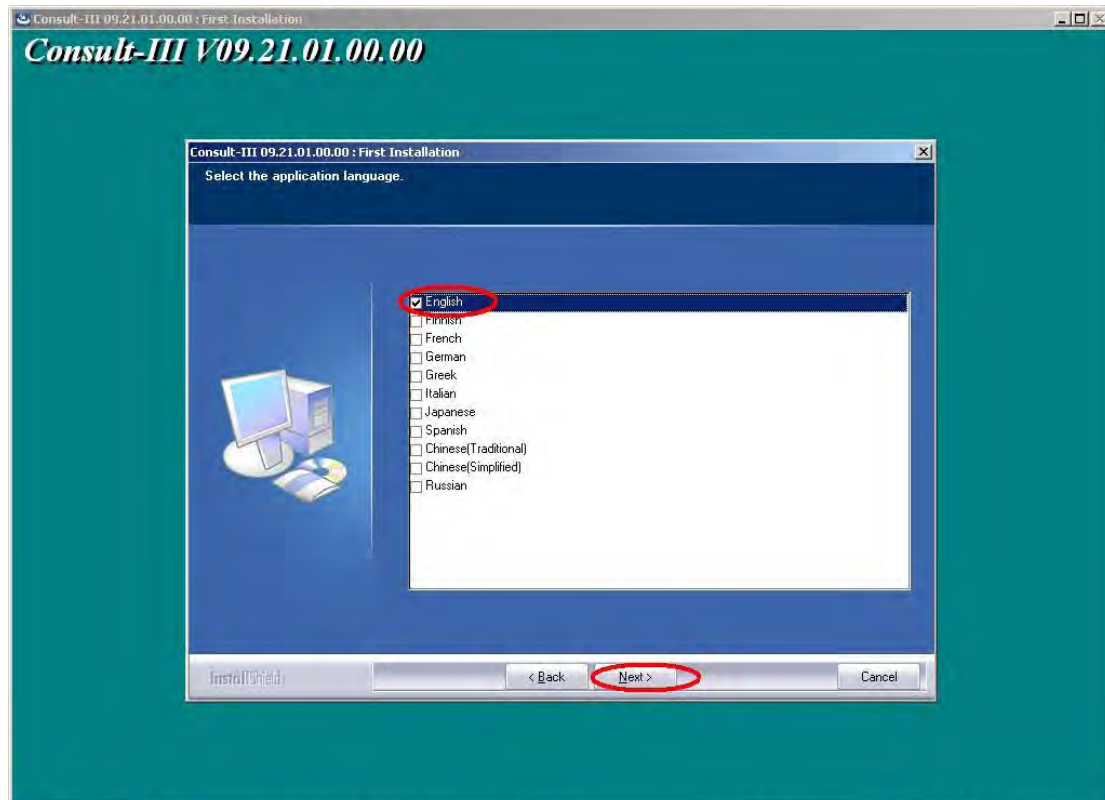


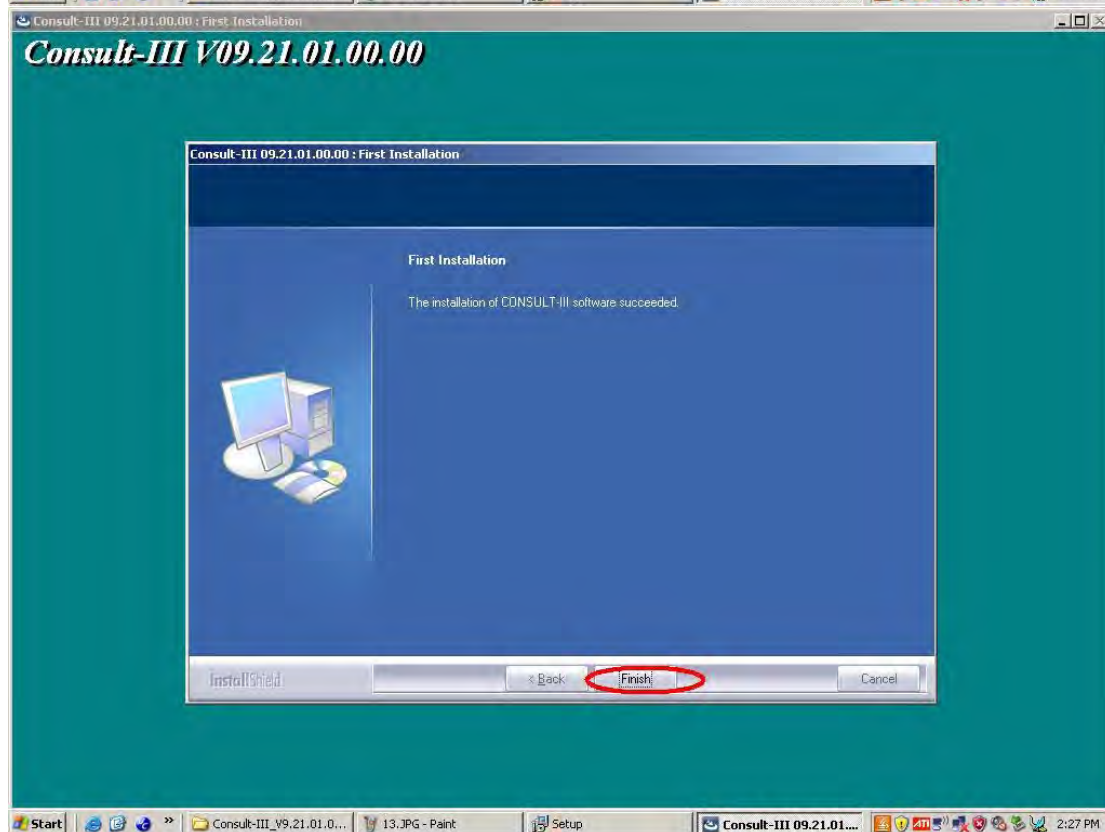
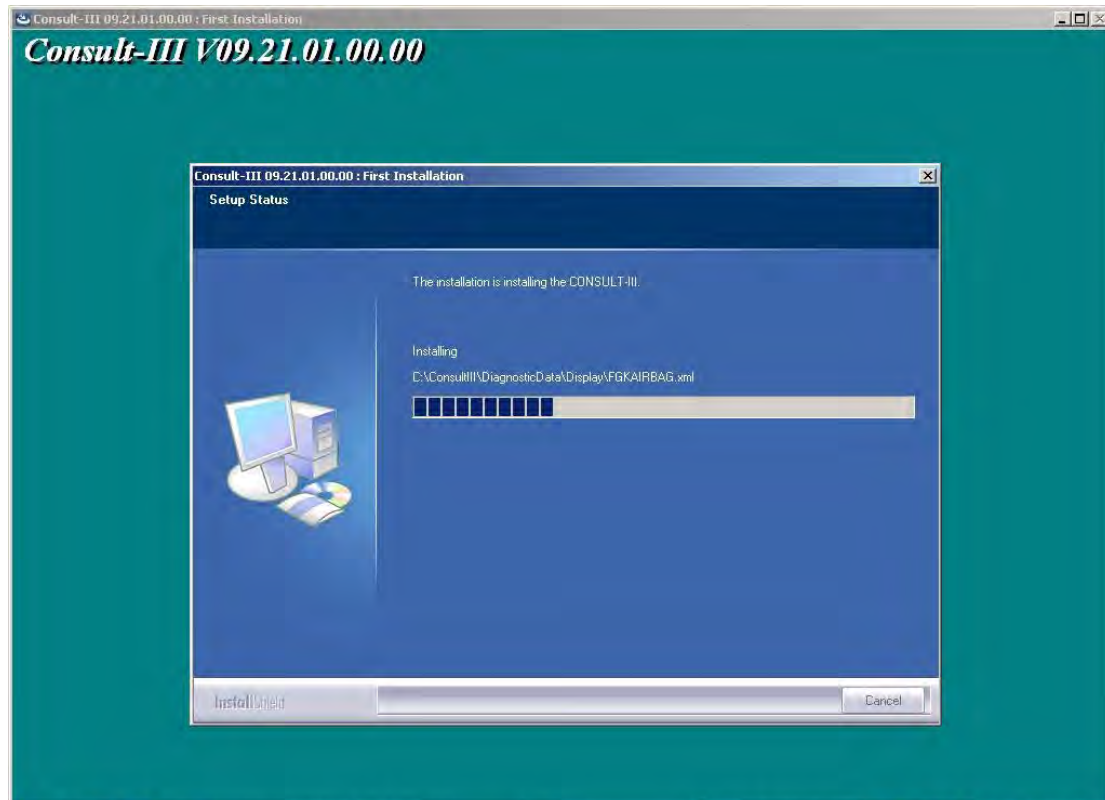




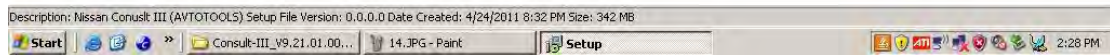
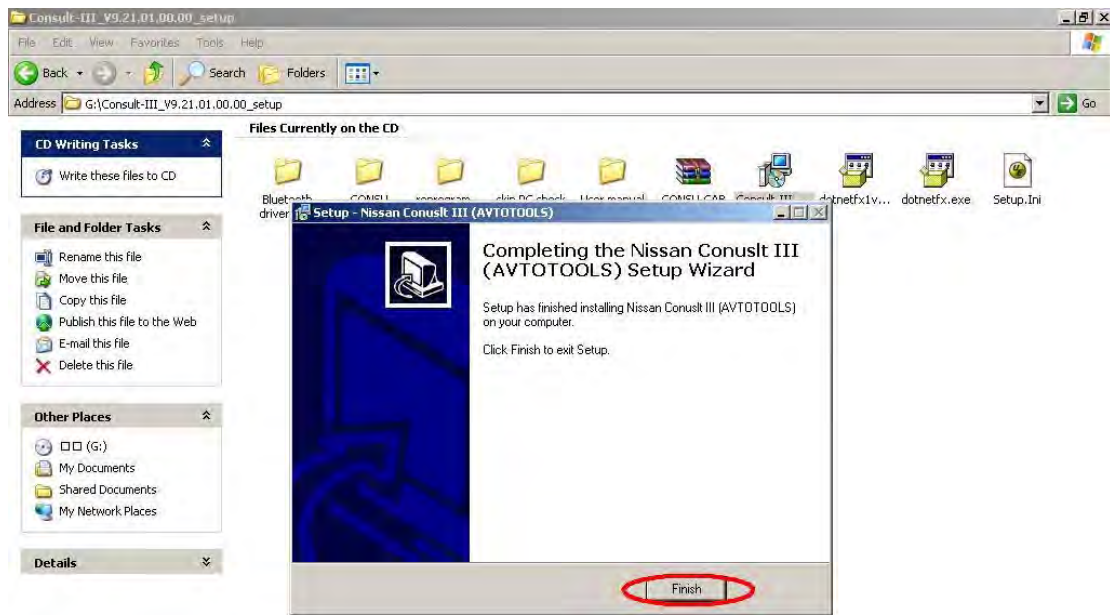




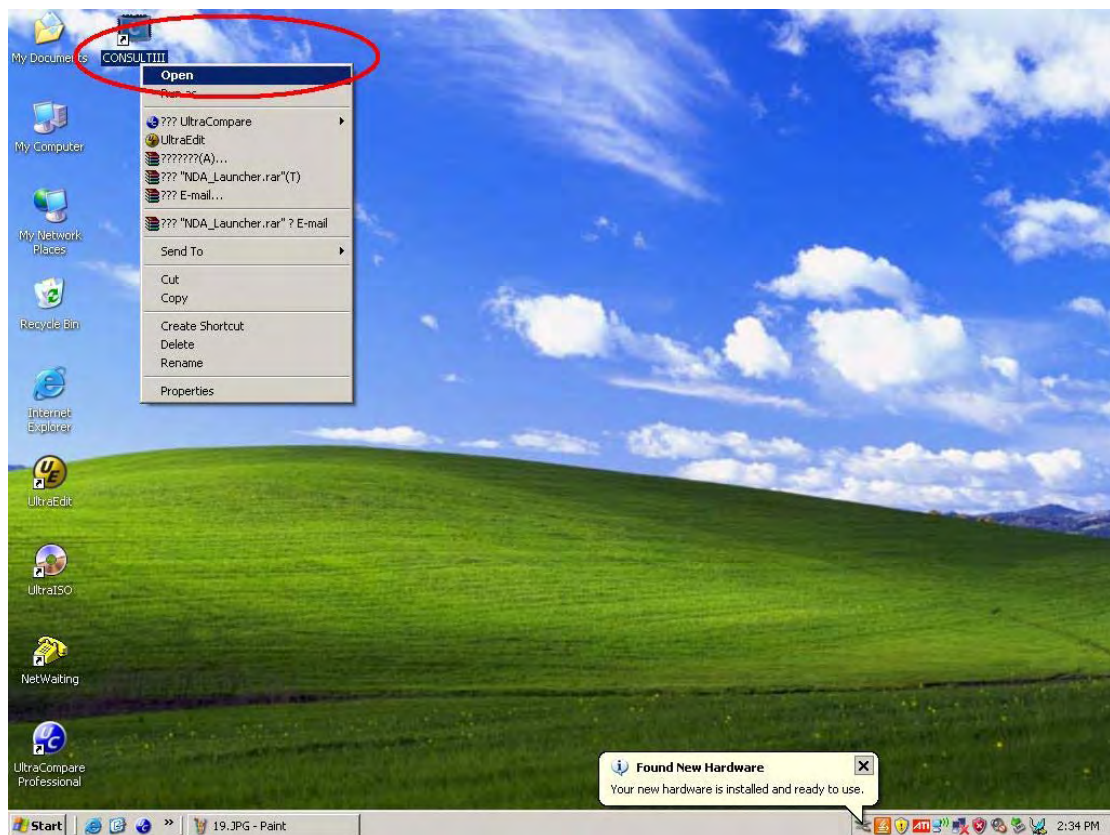




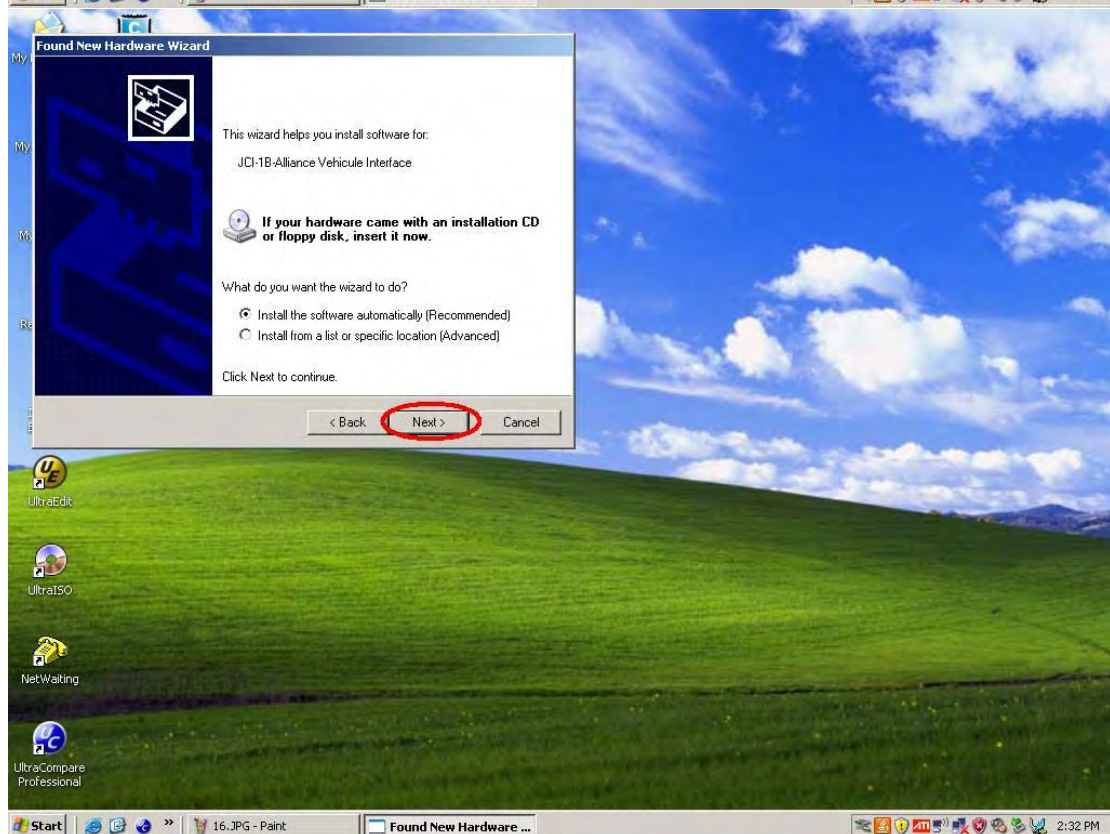
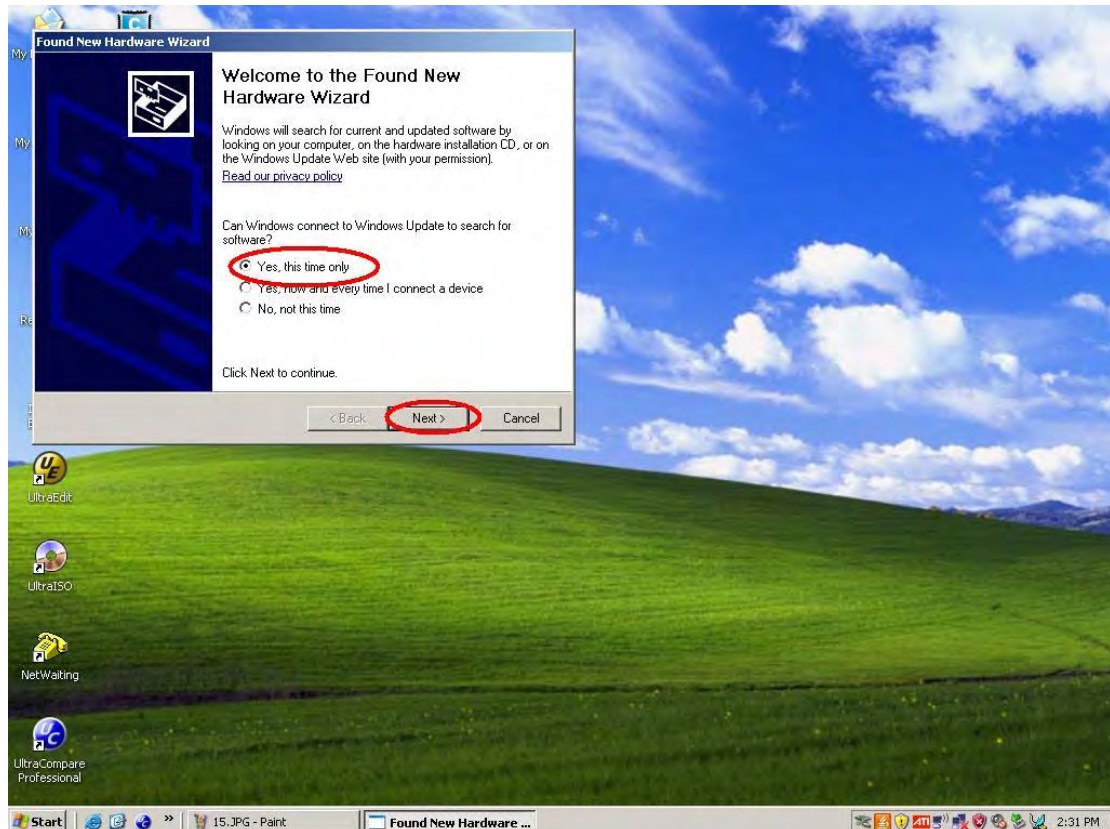


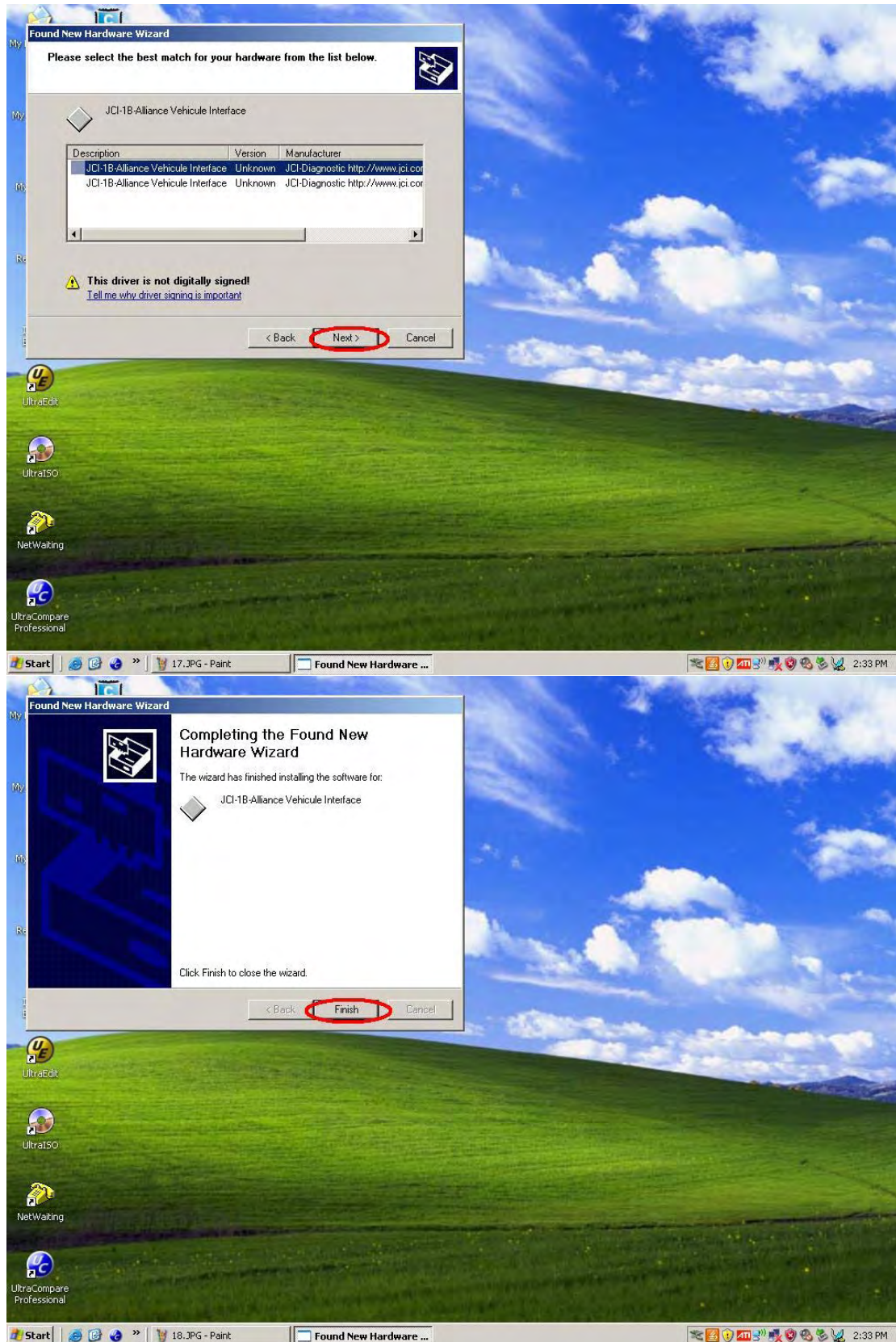


Secondly, Found New Hardware



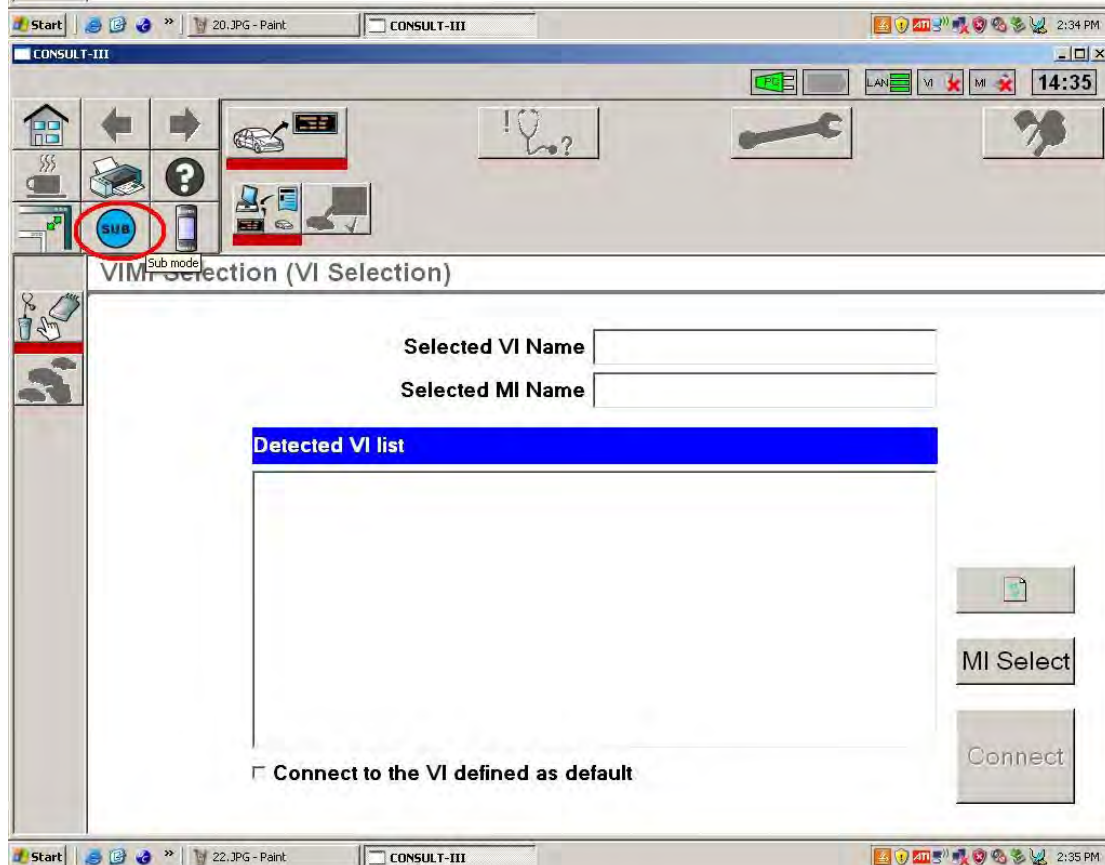
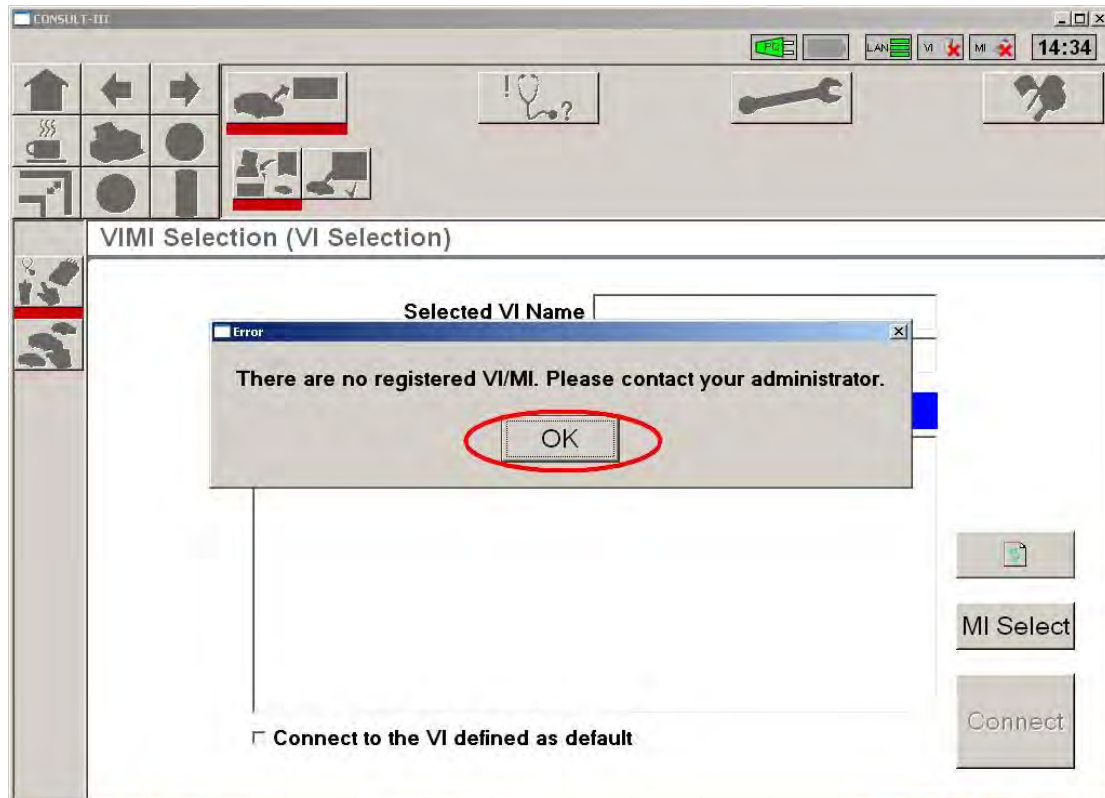




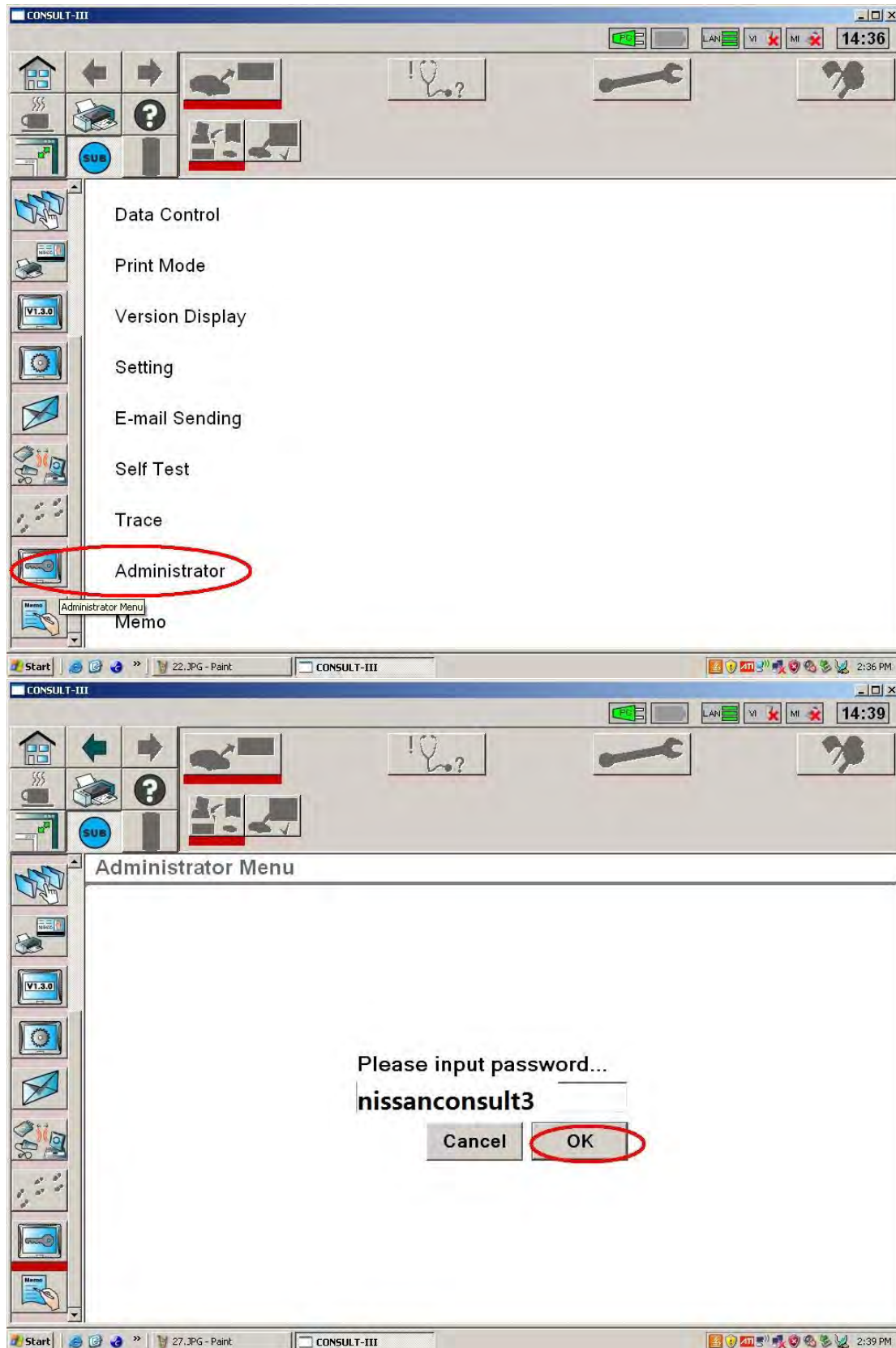


Thirdly, VI Selection Steps

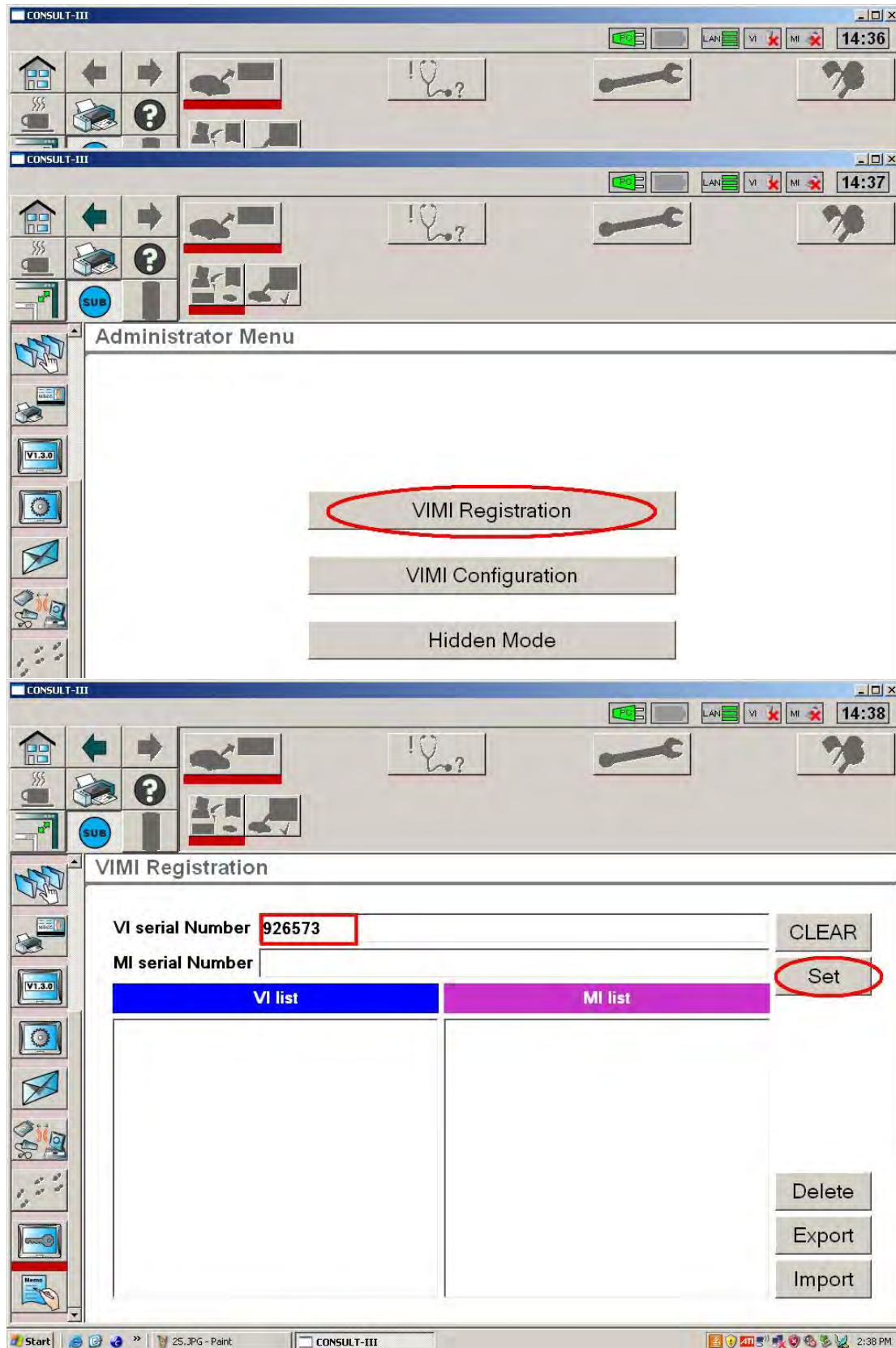






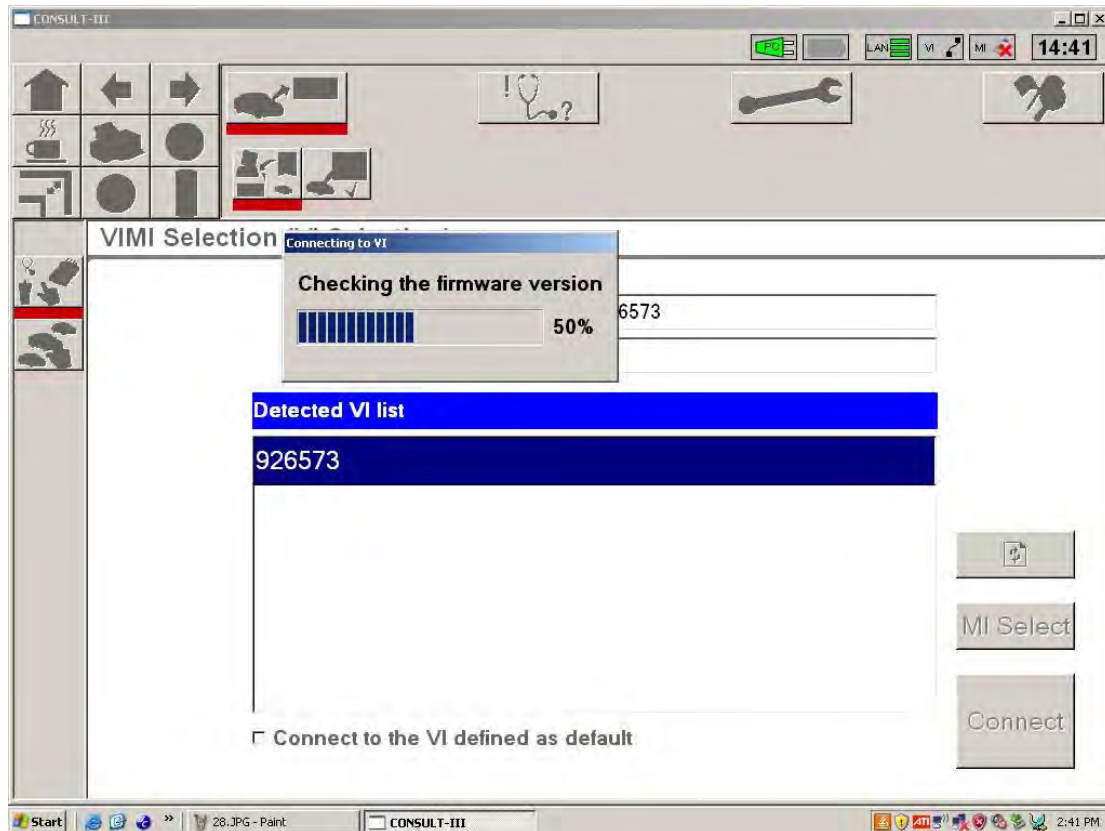


Input Password: "nissanconsult3"

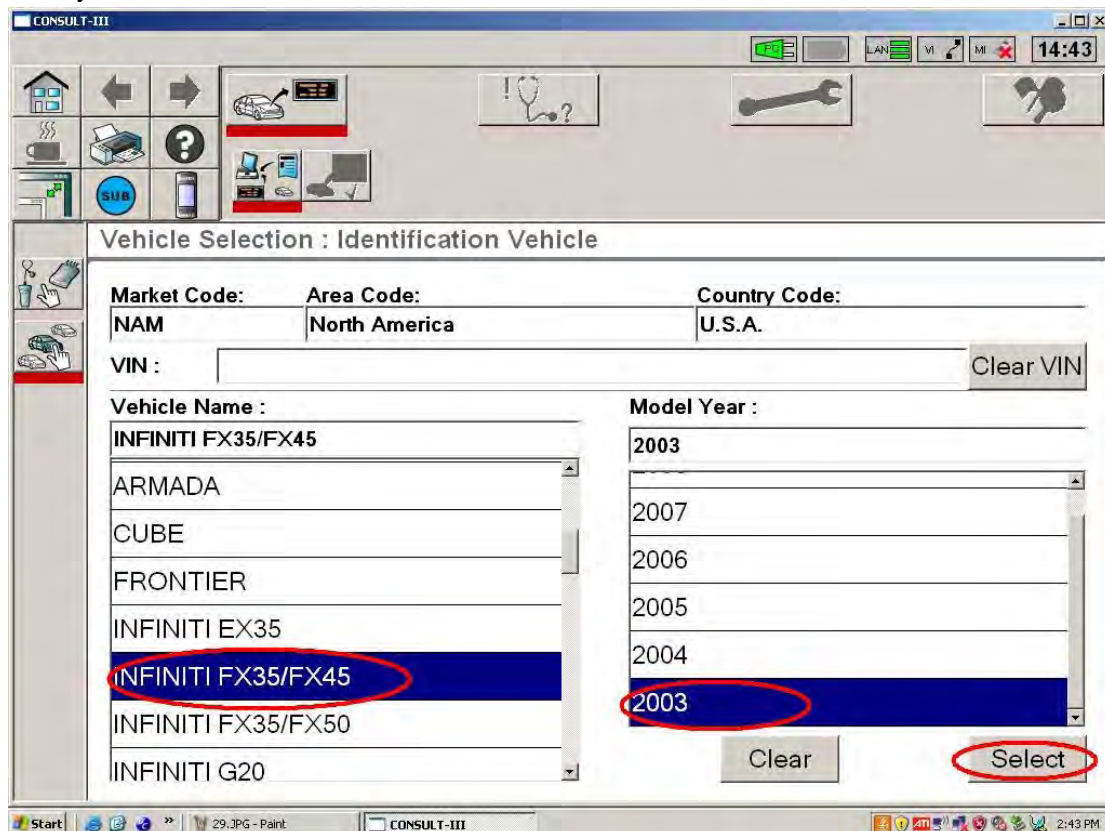








Fourthly, Vehicle Selection



CONSULT-III

14:43

Vehicle Selection : Confirmation Vehicle

Market Code: NAM Area Code: North America Country Code: U.S.A.

VIN :

Vehicle Name INFINITI FX35/FX45

Model Year : 2003

Change Confirm

CONSULT-III

14:44

System Scope

Select System Shortcut

ENGINE

ABS

METER/M&A

BCM

AIR BAG

ICC/ADAS

HVAC

System

ENGINE

Start

System Call 81% Renew

CONSULT-III

14:44

Work Selection

**Diagnosis**

To perform diagnosis, touch the button, "Diagnosis".

- CAN Diagnosis
- All DTC Reading
- ECU Identification
- Self Diagnostic Result
- Data Monitor
- Active Test
- Function Test
- DTC & SRT Confirmation

**Repair**

To perform operation required after parts replacement or key registration etc, touch the button, "Repair".

- System selection
- ECU Identification
- Work support
- Configuration
- Reprogramming
- NATS

CONSULT-III

14:45

All DTC Reading

| ENGINE               |                     | Select                     | Store |
|----------------------|---------------------|----------------------------|-------|
| <a href="#">Expl</a> | <a href="#">FFD</a> | P0115 : ECT SEN/CIRC       | 0     |
| <a href="#">Expl</a> | <a href="#">FFD</a> | P0110 : AIR TEMP SEN/CIRC  | 1t    |
| <a href="#">Expl</a> | <a href="#">FFD</a> | P0180 : FUEL TEMP SEN/CIRC | 1t    |
| <a href="#">Expl</a> | <a href="#">FFD</a> | P1490 : VC/V BYPASS/V      | 1t    |
| <a href="#">Expl</a> | <a href="#">FFD</a> | P0105 : ABSL PRES SEN/CIRC | 1t    |
| <a href="#">Expl</a> | <a href="#">FFD</a> | P0446 : VENT CONTROL VALVE | 1t    |
| <a href="#">Expl</a> | <a href="#">FFD</a> | P1464 : FUEL LEVL SEN/CIRC | 1t    |

Print